

พม่าดา

พระนิพนธ์ใน สมเด็จพระเจ้าฟ้าบรมพิตรสุภูมิพันธุ์

ส่วนขึ้น ท่อน ๑

2

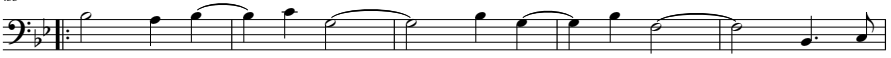
Musical score for Bassoon, Part 1, measures 1-70. The score is written in bass clef with a key signature of one flat (B-flat) and a common time signature (C). It consists of ten staves of music. The first staff begins with a double bar line and a fermata, followed by a measure rest and then the start of the melody. The score includes various rhythmic values such as quarter, eighth, and sixteenth notes, as well as rests and slurs. Measure numbers 7, 14, 20, 26, 30, 36, 43, 51, 58, and 65 are indicated at the beginning of their respective staves. The piece concludes with a double bar line and a fermata in the final measure (70).

ພູມາຕາ
Bassoon



ພມ່າຕາ
Bassoon

153



158



163



168



174



179



184



189



194



200



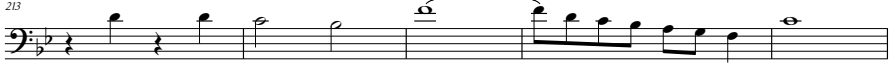
205



209



พม่าตา
Bassoon



พม่าตา
Bassoon

282



288



293



299



304



309



314



320



325



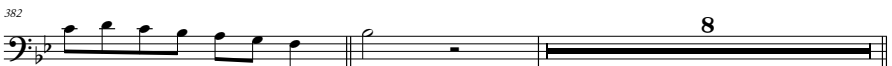
331



335

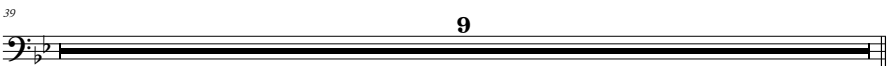


พม่าตา
Bassoon



พม่าตา
Bassoon

ส่วนขึ้น ท่อน ๖



พม่าตา
Bassoon

ส่วนอื่น ท่อน ๓

Musical score for Bassoon, Part 3, measures 1-36. The score is written in bass clef with a key signature of one flat (B-flat) and a common time signature (C). The music consists of several lines of notes and rests, with measure numbers 7, 13, 19, 26, 32, and 36 indicated. A double bar line with the number 8 is present at the end of the section.

ส่วนอื่น ท่อน ๔

Musical score for Bassoon, Part 4, measures 1-24. The score is written in bass clef with a key signature of one flat (B-flat) and a common time signature (C). The music consists of several lines of notes and rests, with measure numbers 5, 12, 18, and 24 indicated. A double bar line with the number 2 is present at the beginning of the section.

พม่าตา
Bassoon



พม่าตา
Bassoon

สองชั้น 4/4

7

12

16

21

25

29

35

42

47

51

56

พม่าตา
Bassoon

61 Solo

68

75

82

87

92

99

104

110

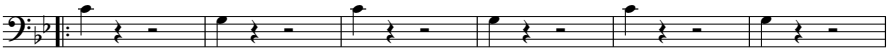
115

120

124

พม่าตา
Bassoon

129



135



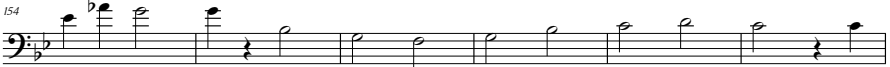
141



148



154



160



166



172



177



180



ພູມາຕາ
Bassoon

184



189



194



198



202



207



211



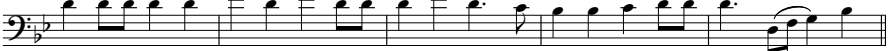
215



220



226



231

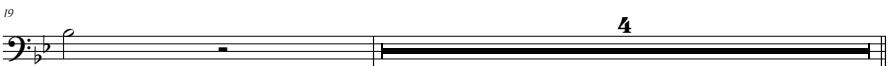


พม่าตา
Bassoon

สองชั้น ร้อย ๒



สองชั้น ร้อย ๓



พม่าตา
Bassoon

สองชั้น ร้อย ๕

6

11

16

4

สองชั้น ร้อย ๕

6

10

14

18

21

พม่าตา
Bassoon

ขึ้นด้วย โธนา *

1

5

9

16

23

29

36

41

46

53

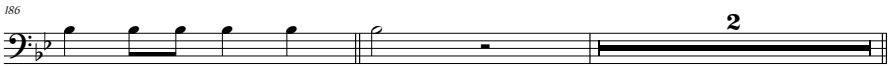
58

63

พม่าตา
Bassoon



พม่าตา
Bassoon



ພາວາດາ
Bassoon

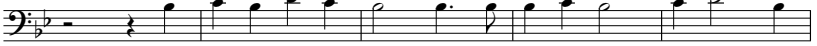
ສິ້ນຜ່ວງ ກ່ອນ ໒



6



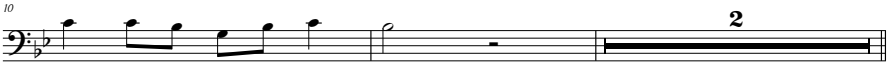
ສິ້ນຜ່ວງ ກ່ອນ ໓



6



10



ສິ້ນຜ່ວງ ກ່ອນ ໔



6



ສິ້ນຜ່ວງ ກ່ອນ ໕



7



14



20



26

